

PDIA6 Antibody (Center D251)
Purified Rabbit Polyclonal Antibody (Pab)
Catalog # AP6662c

Specification

PDIA6 Antibody (Center D251) - Product Information

Application	FC, WB, IHC-P,E
Primary Accession	Q15084
Other Accession	Q63081 , Q922R8
Reactivity	Human
Predicted	Mouse, Rat
Host	Rabbit
Clonality	Polyclonal
Isotype	Rabbit IgG
Calculated MW	48121
Antigen Region	236-264

PDIA6 Antibody (Center D251) - Additional Information

Gene ID 10130

Other Names

Protein disulfide-isomerase A6, Endoplasmic reticulum protein 5, ER protein 5, ERp5, Protein disulfide isomerase P5, Thioredoxin domain-containing protein 7, PDIA6, ERP5, P5, TXNDC7

Target/Specificity

This PDIA6 antibody is generated from rabbits immunized with a KLH conjugated synthetic peptide between 236-264 amino acids from the Central region of human PDIA6.

Dilution

FC~~1:10~50

WB~~1:1000

IHC-P~~1:50~100

E~~Use at an assay dependent concentration.

Format

Purified polyclonal antibody supplied in PBS with 0.09% (W/V) sodium azide. This antibody is prepared by Saturated Ammonium Sulfate (SAS) precipitation followed by dialysis against PBS.

Storage

Maintain refrigerated at 2-8°C for up to 2 weeks. For long term storage store at -20°C in small aliquots to prevent freeze-thaw cycles.

Precautions

PDIA6 Antibody (Center D251) is for research use only and not for use in diagnostic or therapeutic procedures.

PDIA6 Antibody (Center D251) - Protein Information

Name PDIA6

Synonyms ERP5, P5, TXNDC7

Function May function as a chaperone that inhibits aggregation of misfolded proteins (PubMed:[12204115](#)). Negatively regulates the unfolded protein response (UPR) through binding to UPR sensors such as ERN1, which in turn inactivates ERN1 signaling (PubMed:[24508390](#)). May also regulate the UPR via the EIF2AK3 UPR sensor (PubMed:[24508390](#)). Plays a role in platelet aggregation and activation by agonists such as convulxin, collagen and thrombin (PubMed:[15466936](#)).

Cellular Location

Endoplasmic reticulum lumen. Cell membrane. Melanosome. Note=Identified by mass spectrometry in melanosome fractions from stage I to stage IV (PubMed:12643545)

Tissue Location

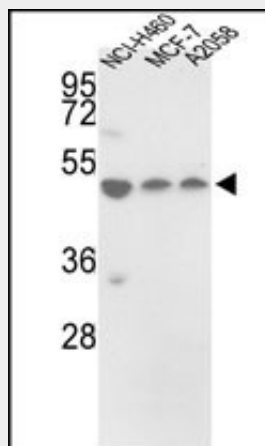
Expressed in platelets (at protein level).

PDIA6 Antibody (Center D251) - Protocols

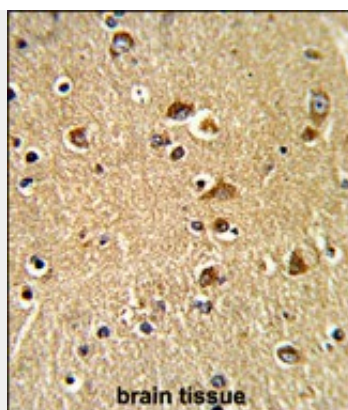
Provided below are standard protocols that you may find useful for product applications.

- [Western Blot](#)
- [Blocking Peptides](#)
- [Dot Blot](#)
- [Immunohistochemistry](#)
- [Immunofluorescence](#)
- [Immunoprecipitation](#)
- [Flow Cytometry](#)
- [Cell Culture](#)

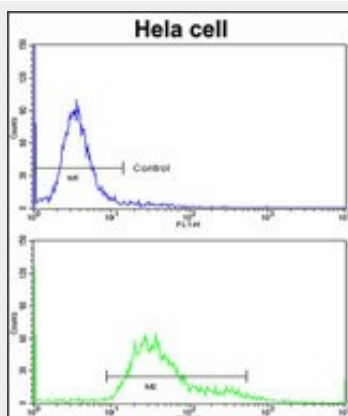
PDIA6 Antibody (Center D251) - Images



Western blot analysis of PDIA6 Antibody (Center D251) (Cat. #AP6662c) in NCI-H460, MCF-7, A2058 cell line lysates (35ug/lane). PDIA6 (arrow) was detected using the purified Pab.



Formalin-fixed and paraffin-embedded human brain tissue reacted with PDIA6 Antibody (Center D251), which was peroxidase-conjugated to the secondary antibody, followed by DAB staining. This data demonstrates the use of this antibody for immunohistochemistry; clinical relevance has not been evaluated.



Flow cytometric analysis of hela cells using PDIA6 Antibody (Center D251)(bottom histogram) compared to a negative control cell (top histogram) FITC-conjugated goat-anti-rabbit secondary antibodies were used for the analysis.

PDIA6 Antibody (Center D251) - Background

Protein disulfide isomerases (EC 5.3.4.1), such as PDIA6, are endoplasmic reticulum (ER) resident proteins that catalyze formation, reduction, and isomerization of disulfide bonds in proteins and are thought to play a role in folding of disulfide-bonded proteins.

PDIA6 Antibody (Center D251) - References

Hayano,T.,Gene 164 (2), 377-378 (1995)